



Wireless Panel AC



WiZ Pro Wireless Panel AC

929003360571 (Grey) / 929003360671 (White)

Enabling connected lighting system for welcoming spaces

WiZ Pro Wireless Panel AC is an AC operated wireless control panel with self-reset keypad. It can provide features as accessory in the system such as light on/off, dim up/down, 4 favorite scenes. It enables simple, cost effective wireless lighting system for energy saving and comfort. Advanced design of the wireless panel helps to build a reliable, scalable and standardized connected lighting with different functionalities from simple wireless dimming to favorite scene configurations.

Benefits

- Easy wireless dimming for energy saving and convenience
- Self-reset switch panel to provide control functions
- Local communication protocol not relying on Wi-Fi network and connectivity, so the accessory can control the lights even if Wi-Fi is down. No gateway needed
- Some features can be modified remotely using cloud settings for the lights for favorites of rooms and scenes
- CE/CB/UKCA certificated

Features

- 220V - 240V AC input
- 6 keypads
- Extra low standby power
- 50,000 hours lifetime
- Integrated as accessory in WiZ Pro software suite
- <https://www.wizconnected.com/en/pro/get-started/>

Application

- Residential
- Hospitality
- Restaurant
- Retail
- School
- Leisure places

Logistical data

Specification item	Value
Product name	WiZ Pro Wireless Panel AC G / WiZ Pro Wireless Panel AC W
12NC/Model	929003360571 / 929003360671
Pieces per box	24 pcs

Product Data

All specifications are typical and at 25 °C Tcase unless otherwise specified

Electrical data			
Specification item	Value	Unit	Conditions
Rated input voltage	220...240	Vac	Performance range
Rated input current	0.18	mA	
Active current	7.17	mA	
Rated input frequency range	50...60	Hz	
Input voltage AC range	198...264	Vac	Operational range
Input frequency AC range	47.5...63	Hz	Operational range
Standby power	0.05	W	@ rated input voltage
ESD	4KV @ HBM, 8KV @ Air		
Mains surge capability (L to N)	1000	V	Diff mode

Interface	
Specification item	Value
Keypad	6

RF interface			
Specification item	Value	Unit	Conditions
Communication method	Wi-Fi		
Wi-Fi Frequency	2400-2483.5	MHz	IEEE Std 802.11 b/g
Wi-Fi Transmission power	20	dBm	Maximum
Wi-Fi channel	1...13		

Indicator	
Specification item	Value
LED indicator	6 white Color

Operational temperature and humidity			
Specification item	Value	Unit	Conditions
Ambient temperature	-20...+45	°C	
Relative humidity	10...90	%	
Tcase_life	50	°C	
Tcase_max	50	°C	

Storage temperature and humidity			
Specification item	Value	Unit	Conditions
Ambient temperature	-25...+85	°C	
Relative humidity	5...95	%	

Lifetime			
Specification item	Value	Unit	Conditions
Lifetime	50,000	Hours	@ Tcase_life. Maximum failures=10%
Key press cycles	100,000	Cycles	

Certificates and standards	
Specification item	Value
Approval marks	CE/CB/UKCA, RED

Environment	RoHS, REACH
Connection	Wi-Fi IEEE802.11 b/g,
Audible noise	< 24 dB @5cm
Ingress Protection	IP20

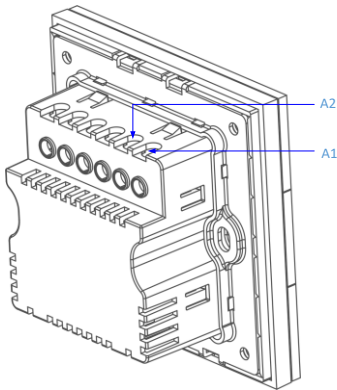
Notes:

Simplified EU Declaration of Conformity
 Hereby, Signify declares that the radio equipment type WiZ wireless panel is in compliance with the Directive 2014/53/EU. The full text of the EU declaration of conformity is available at the following internet address: www.wizconnected.com/

Simplified UK Declaration of Conformity
 Hereby, Signify declares that the radio equipment type WiZ wireless panel is in compliance with the Radio Equipment Regulations 2017 (S.I. 2017/1206). The full text of the UK declaration of conformity is available at the following internet address: www.wizconnected.com

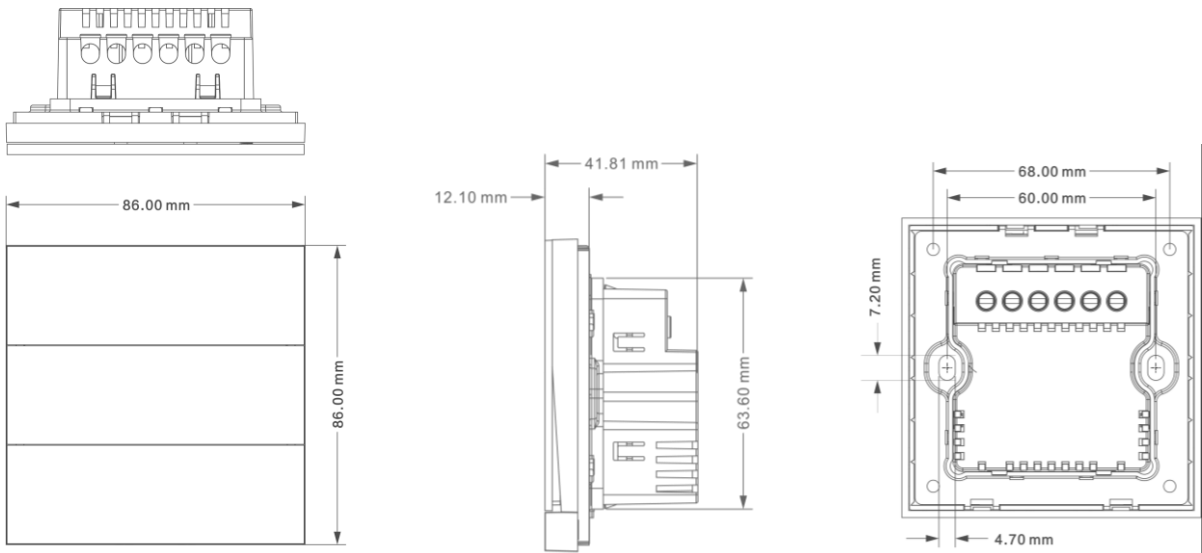
Wiring & Connections

Specification item	Value	Unit	Conditions
Input Mains Wire Type(A1 ,A2)	0.5...2.5	mm ²	Tolerance: +/- 0.1mm ²
Wire Strip Length	6...7	mm	

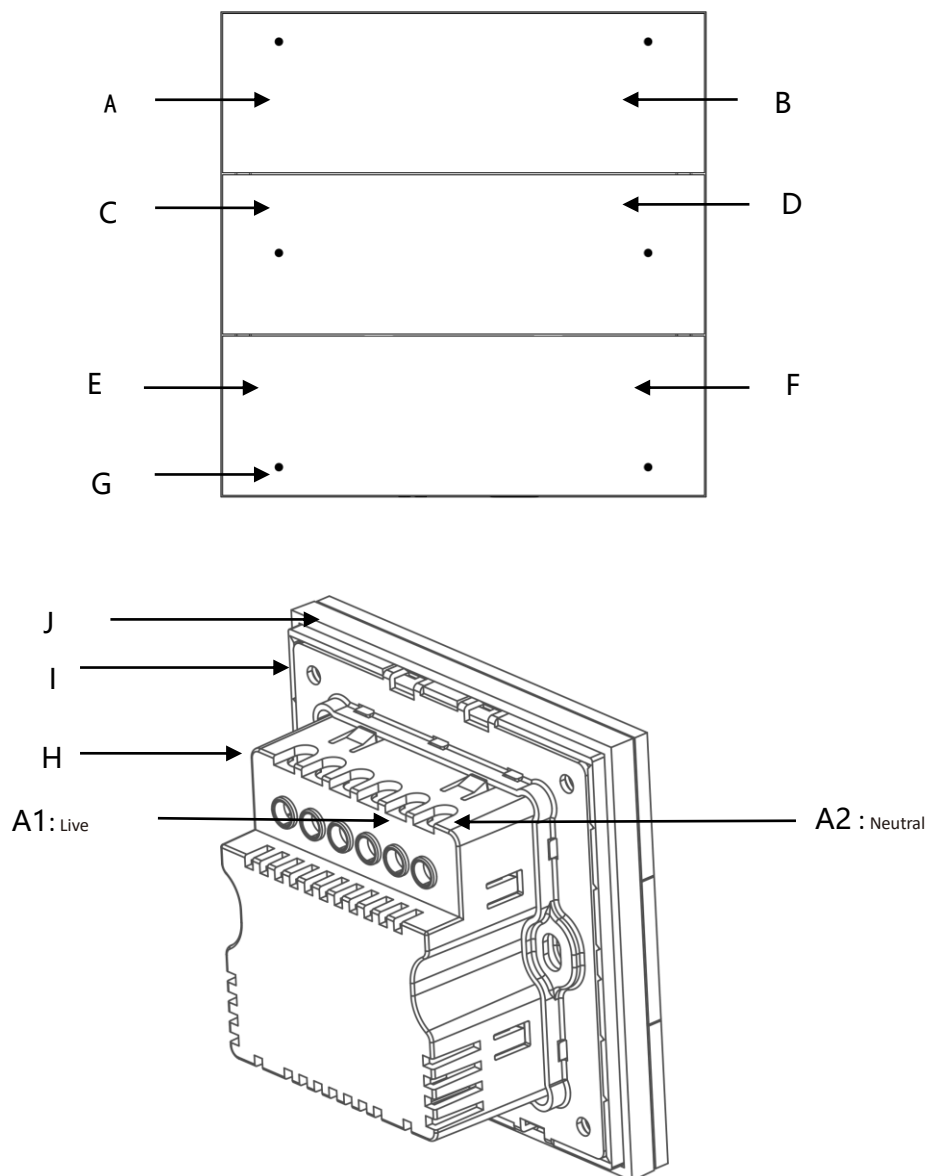


Dimensions and weight

Specification item	Value	Unit	Conditions
Dimensions L x W x H	86*86*41.8	mm	Tolerance: +/- 0.1mm
Color/ Material	Dark Grey/White/PC		
Weight	131	gram	



1 Wiring & Connections Wizard



Symbols	Specification item	Definition	Remark
A1	220V-240V ~ L	Live input terminal	
A2	220V-240V ~ N	Neutral input terminal	
C...F	SCENE 1-4 or Night mode	Input Keypad	1,2,3,4
B	OFF / -	Off or Dim down	Short press or long press
A	ON / +	ON or Dim up	Short press or long press
G	LED indicator	LED flash with key pressed	
H	Power Supply Unit	Power supply for panel	
I	Metal rack	For fixing panel	
J	Panel	Detachable control panel	

2 Notes and Installation

Important notes:

- The wireless panel is compatible with standard 86 wall box only. Potential safety risks (e.g electric shock) may exist if the wireless panel is installed in other types of wall boxes. Any confusion please consult WiZ or qualified professional.
- The wireless panel works only with WiZ products. It does not support Philips Hue products.
- The wireless panel works as a remote control. It does not provide physical electricity circuit break when turning off a WiZ product with a WiZ PRO wireless panel. The user shall always disconnect the mains supply before installing or maintaining the controlled WiZ product (e.g lamp replacement) via a physical switch (e.g a circuit breaker).

Installation:

- Figure 1: Always disconnect the AC mains supply prior to installation (e.g by circuit breaker), connect the AC input power cable with the L and N terminals of the bottom box, and fix the wires with screws.
- Figure 2: Install the bottom box (Power Supply Unit) inside the wall box and secure it with screws (with torque around 2.0kgf.cm)
- Figure 3: Align the upper part of the panel on the base, then press down to buckle it.
- Turn on the AC mains supply

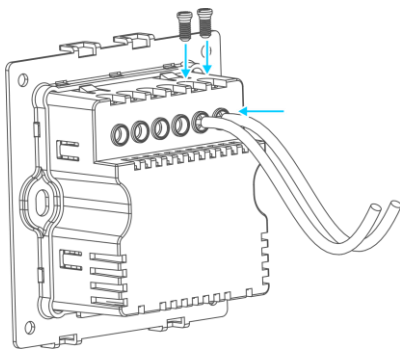


Figure 1

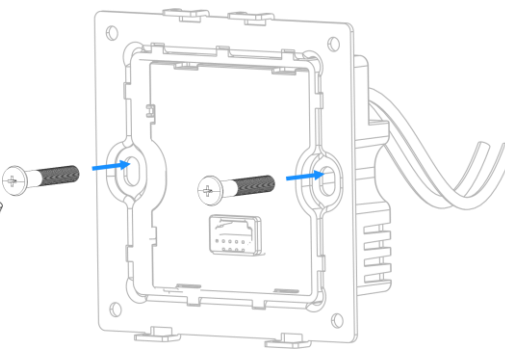


Figure 2

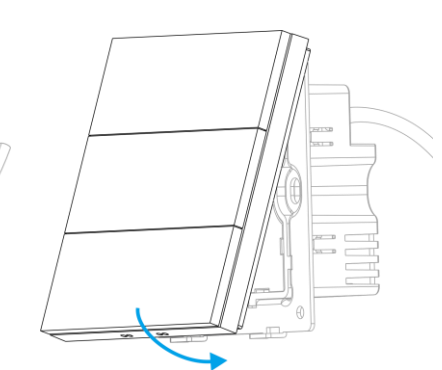


Figure 3

3 Commissioning

Keep the device powered on, open the WiZ App software, add "Wall Controller", follow the App prompts, press the ON button 3 times until the device is successfully paired.

4 Disposal method

Please inform yourself about the local waste disposal, separation and collection system for electrical and electronic products and packaging. Please act according to your local rules and do not dispose your old product and packaging with your normal household waste. The correct disposal of the packaging, your product and/or batteries will help prevent potential negative consequences for the environment and human health. Batteries should be disposed separately from the municipal waste stream via designated collection facilities. When disposing a product that contains non-user replaceable batteries, the non-user replaceable batteries shall be removed by a professional.



Download free WiZ App



The information presented in this document is not intended as any commercial offer and does not form part of any quotation or contract.

WiZ is a global brand of



© 2022 Signify Holding, IBRS 10461, 5600VB, NL. All rights reserved. This document contains information relating to the product portfolio of Signify which information may be subject to change. No representation or warranty as to the accuracy or completeness of the information included herein is given and any liability for any action in reliance thereon is disclaimed. All trademarks are owned by Signify Holding or their respective owners.

Signify – I.B.R.S. / C.C.R.I Numéro
10461 5600 VB Eindhoven
The Netherlands

Signify Commercial UK Ltd.
Unit 3,
Guildford Business Park
Guildford, Surrey, GU2 8XG, UK